

AIRPOWER® XR26

Art. No. 607209



ASTM F2413-2018, CAN/CSA Z195-2014

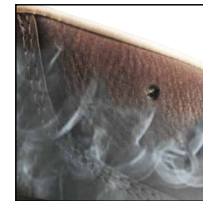
Nubuk leather brown 1.8 – 2.0 mm, waterproof and breathable with GORE-TEX® Performance, leg height 6 inch, antistatic, sole 012

Available sizes US 4.5 – 15 & half sizes

Widths: Medium and Wide



607209



HAIX® Climate System



Upper Material

Nubuk leather, hydrophobic, breathable (5.0 mg/cm²/h), 1.8 – 2.0 mm thick

Inner Lining

GORE-TEX® Performance; waterproof and breathable. Highly abrasion-resistant lining with fleece midlayer. Optimized climate comfort for all year seasons and excessive use. Increased chemical protection.

Non-woven insole

Non-woven insole absorbs moisture.

Foot bed

For extra foot comfort, impact-absorbing, moisture-wicking. Separate heel cup ensures optimized cushioning and foot guidance. "AIRFLOW" channels.

HAIX® Protective toe cap

Anatomically formed and ultralight protective toe cap made of fiber-reinforced plastic that meets the highest safety requirements.

HAIX® Protective sole

Flexible, lightweight and protective metal-free throughsole.

Sole

Anti-slip rubber/PU sole with road/off-road profile, abrasion-proof, for enhanced toe-to-heel support, ideal for cold weather conditions. The lightweight PU cushioning wedge provides optimum wear comfort. Excellent thermal insulation. The non-marking outer sole is resistant to heat and fuel-oil.

HAIX® Climate System

The HAIX® Climate system uses the pumping movement, which permits air circulation with every step – warm air is released and fresh air comes in through the vent holes at the top of the boot.

HAIX® Vario Wide Fit System

For a more individualized fit, boots fit can be adjusted with an alternate insole. Blue – narrower fit (thickest), Red – Moderate fit (average thickness), Yellow – Wider fit (thinnest). If boots feel slightly wide, HAIX® recommends using the next thickest insole; or, if slightly narrow, to use the next thinnest insole.

HAIX® AS System

The HAIX® Arch Support System supports the natural curvature of the foot. Toes and joints have thereby sufficiently more space. Keeps foot in the best position for optimal foot health.

Others

High quality, easy running lacing elements, padded shaft, TPU-toe cap

Extended Wear Program

Out of warranty footwear can be refurbished with original factory parts through an extended wear package. This package includes any necessary replacement or repair of stitching, profiled rubber toe caps, insoles, and retreading of soles. Footwear will be cleaned and deodorized. HAIX footwear owners also have the option of a sole retread only or a toe cap replacement only.

UK	3	3½	4	4½	5	5½	6	6½	7	7½	8	8½	9	9½	10	10½	11	11½	12	12½	13	13½	14	14½	15
EU	35	36	37	37	38	39	39	40	41	41	42	43	43	44	45	45	46	47	47	48	48	49	50	50	51
US	4	4½	5	5½	6	6½	7	7½	8	8½	9	9½	10	10½	11	11½	12	12½	13	13½	14	14½	15	15½	16

HAIX® North America Inc.

2320 Fortune Drive, Suite 120, Lexington, KY 40509
 Phone 859-281-0111, Fax 859-281-0113
 Toll free 866-344-HAIX (4249), www.haix.com